

**CATALOGUE OF
TERRACOTTA FIGURINES
FROM RAJGHAT EXCAVATIONS
(1940)**



**B.R. MANI
ARUNDHATI BANERJI**

ARCHAEOLOGICAL SURVEY OF INDIA

MEMOIRS OF THE
ARCHAEOLOGICAL SURVEY OF INDIA
No. 108

**CATALOGUE OF
TERRACOTTA FIGURINES
FROM RAJGHAT EXCAVATIONS
(1940)**



92439

**B.R. MANI
ARUNDHATI BANERJI**

R-930.103
H5J-M



प्रत्नकीर्तिमपावृणु

Published by
The Director General
Archaeological Survey of India
Janpath, New Delhi
2012

**Published on the occasion of 150th Year celebration of
Archaeological Survey of India's foundation**

APC/CS/11/11 92439 Date 14/5/13
R-930.103/AST-M

Cover: Front: Terracotta Human Head from Rajghat
Back: A View of Excavated Site of Rajghat (1940)

©

2012

ARCHAEOLOGICAL SURVEY OF INDIA
GOVERNMENT OF INDIA

Price : ₹ 350.00



*Printed at India Offset Press, A-1, Mayapuri Industrial Area, Phase-I, New Delhi,
Ph. : +91-11-28116494, 9811526314*

Contents

Foreword	v
Preface	vii
Acknowledgements	ix
Introduction	xi
Human Figurines from Rajghat	1
Animal Figurines from Rajghat	105

Received from Complementary Copy

100-2000-2000-2000

100-2000-2000-2000

100-2000-2000-2000
100-2000-2000-2000
100-2000-2000-2000

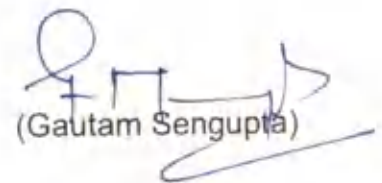


Foreword

The archaeological mounds at Rajghat represent the ancient city of Kasi or Varanasi on the right bank of the Ganga, located due north of the present day city. Krishna Deva was the first to authentically identify the site when he conducted excavations in 1940 on behalf of the Archaeological Survey of India and found the famous Gupta sealing with the legend 'Bārāṇasyadhishṭhānādhikaraṇasya' (the seal of the city administration of Varanasi).

Krishna Deva discovered, besides other antiquities, a large number of human and animal terracotta figurines datable from the Sunga-Kushan to the early medieval age. These important pieces remained confined in the Central Antiquity Collection Section of the Archaeological Survey of India in New Delhi and most of the terracottas were not published. Krishna Deva had made a reference to some of these pieces in his paper titled 'Excavations at Rajghat near Banaras' which was published in the *Annual Bibliography of Indian History and Indology* (Vol. III for 1940) from Bombay in 1944. I am happy to note that Dr. B.R. Mani located the objects and started working on the material and the catalogue is being published by him in collaboration with Dr. Arundhati Banerji.

I am sure the catalogue will find appreciation from the scholarly community and general readers. I congratulate the authors for the worthwhile venture.



(Gautam Sengupta)

New Delhi

29.03.2012

100-2000-2000-2000

100-2000-2000-2000

100-2000-2000-2000
100-2000-2000-2000
100-2000-2000-2000



Preface

Rajghat is an important archaeological site excavated by the Archaeological Survey of India under Krishna Deva in 1940 and later by A.K. Narain and his colleagues of the Department of Ancient Indian History, Culture and Archaeology, Banaras Hindu University in 1957-58, 1960-61 and from 1962-63 to 1960-69. The terracotta figurines are the most interesting class of objects next to seals and sealings found in 1940 excavations which revealed a variety of human and animal figurines. Though, found in all levels, the greater variety could be observed in the Gupta strata which represents the finest examples from this site. Mauryan level did not however, reveal any figurine and the number of figurines from the Śuṅga level is also very small. The Kushan level of Rajghat yielded along side the finished sophisticated types, degenerate archaic human forms with limbs shown in outlines only. The terracotta figurines from Rajghat are many for which no documentation has ever been done before. Therefore, the authors decided to bring out a Catalogue of this interesting collection from Rajghat, presently housed in the Central Antiquity Collection Section of the ASI at Purana Qila, New Delhi which is of immense value for the study of terracotta art of the Gangetic valley. A number of interesting and significant terracottas were given to the Bharat Kala Bhawan, BHU, Varanasi for display which are not included in this catalogue and may be published in future.

B.R. Mani
Arundhati Banerji

30-8-2011
New Delhi

100-2000-2000-2000

100-2000-2000-2000

100-2000-2000-2000
100-2000-2000-2000
100-2000-2000-2000



Acknowledgements

We express our deep gratitude to the Director General Dr Gautam Sengupta for his permission to prepare this Catalogue of Terracotta Figurines from Rajghat preserved in the Central Antiquity Collection, Purana Qila, New Delhi. Thanks are also due to the then Director (Publication) Dr P.K. Trivedi for agreeing to spare the second author to work in the Central Antiquity Collection to utilize her valuable time in preparing the Catalogue. The photographs are taken by the Photo Officer Shri Rajbir Singh, Senior Photographers Shri Sovan Chatterjee and Shri Teja Singh of the Photo Section. Dr Vinay Kumar Gupta, Consultant (Editing & Publication) is responsible for taking some photographs, serially arranging the photographs and seeing the manuscript through the press for printing, so thanks are due to him. Thanks are also due to the Production Officer Shri Hoshiar Singh for monitoring the work in press. We are also thankful to the then Deputy Superintending Archaeologist Shri K.K. Sharma and Assistant Archaeologist Shri Sarjun Prasad of the Central Antiquities Collection, Purana Qila, New Delhi, for their co-operation and help in making the material easily available for the preparation of Catalogue. We express our deep gratitude to Dr Ellen Raven of Leiden University, Netherland for making available the paper contributed by Shri Krishna Deva published in *The Annual Bibliography of Indian History and Indology* (Vol. III for 1940) from Bombay in 1944. Finally, thanks are also due to Director (Publication) Shri A. K. Sinha and Superintending Archaeologist (Publication) Dr Madhulika Samanta for their cooperation in the publication of this book.



Introduction

The archaeological mounds at Rajghat (Long. 83° 1' 30" E and Lat. 25° 4' 30" N) represent the ancient settlement of Varanasi on the northern outskirts of the city near the confluence of Ganga and Varana. The credit of the discovery of this ancient settlement goes to Krishna Deva¹ who took up trial excavation of the site on behalf of the Archaeological Survey of India in October-November 1940 after a railway contractor reported ancient remains while digging for spoil earth in connection with extension and remodelling of the Kasi Railway Station.

The discovery of a sealing during the excavation inscribed in Gupta Brahmi characters as 'Bārāṇasyadhishṭhānādhikaraṇasya' i.e. 'the seal of the city administration of B(V)ārāṇasī' marked the site of ancient Vārāṇasī.

Excavations at three mounds at Rajghat were later carried out by A.K. Narain and his colleagues of the Department of Ancient Indian History, Culture and Archaeology, Banaras Hindu University in 1957-58, 1960-61 and from 1962-63 to 1968-69 without any break and substantial archaeological remains were noticed.²

Ganga takes a northerly course in Varanasi and therefore it is called *Uttaravāhinī* there. On the one hand such a situation added by the confluences of Varana and Asi rivers on the north and south respectively has made the city a sacred area where religious developments increased in the historical times. On the other hand the northerly course of the river has helped in reducing the volume of motion of flow which has also given a semi-circular shape to the left bank of the river making it suitable for anchoring the large sailing boats which were used for the riverine trade down the river upto the Bay of Bengal. Such a location of the city made it a great trading centre which emerged in the middle of the first millennium BC as an urban metropolis with localization and specialization of industries and crafts. The proliferation of the city is elaborately mentioned in the *Tripitaka* and *Jātaka* tales. There are mentions of ship-building industry, crafts of sandal wood, ivory, cloth praised far and wide for their value and beauty, boats sailing to Suvarṇabhūmi, location of ivory-workers street (*Dantakāravīthi*) within the city and specialized craft-villages in the vicinity such as village of carpenters (*vaddhakī-gāma*).³

The later excavations at Rajghat by the Banaras Hindu University suggest a cultural sequence beginning from Period IA which has been dated to around 800 BC. The deposit of Period IA represents pre-Northern Black Polished Ware assemblage having plain and painted Black Slipped Ware and Black-and-Red Ware which have also been found at Sarai Mohana⁴, the site across the river Varana near Rajghat. Such cultural assemblage may be pushed back to the later half of the second millennium BC and thus the antiquity of Rajghat also can be pushed back to at least four to five hundred years earlier. Recent excavations around the city at Akatha and Ramnagar also support this early chronology.⁵

1. Krishna Deva, 'Excavations at Rajghat near Benares', *Annual Bibliography of Indian History and Indology*, Bombay Historical Society, Bombay 1944, Vol. III (for 1940), pp. XLI-LI pls. I - III.

2. A.K. Narain et al, *Excavations at Rajghat*, Banaras Hindu University, Varanasi, 1977.

3. K.T.S. Sarao, *Urban Centres and Urbanization as Reflected in The Pali Vinaya and Sutta Pitakas*, Vidyanidhi, Delhi, 1990 pp. 53-56.

4. B.P. Singh and A.K. Singh, *Excavations at Sarai Mohana 1967-68 (A satellite of Ancient Varanasi)*, B.H. U., Varanasi, 2004.

5. Vidula Jayaswal, *Ancient Varanasi- An Archaeological Perspective*, Aryan Books International, New Delhi, 2009.

The city settlement at Rajghat which already had attained socio-economic prosperity during the pre-Mauryan times had also become great centre of art, culture and religion. Sarnath, the ancient Isipatana or Migadāva was selected by Lord Buddha to Turn the Wheel of Law in Motion. Subsequent Sanskrit literature also mentions Vārāṇasī as the city of Kāśī *mahājanapada* located along the *Uttaravāhinī* Gaṅgā in between Varāṇā in the north and Asī in the south. Such references are contained in the *Matsya*, *Kūrma*, *Linga*, *Padma*, *Agni*, *Skanda*, *Bhavishya* and other *Purāṇas* and *Kāśī-Khaṇḍa*. The sacred areas and sacred spots were identified and hundreds of temples and sacred structures were constructed in the Gupta and post-Gupta periods. Chinese travellers Faxian and Xuanzang also indicate such developments.

The elevated landscapes with three higher areas were conceived to be three sectors of the city, namely Oṅkāra-Khaṇḍa in the north, Viśveśvara-Khaṇḍa in the middle and Kedāra-Khaṇḍa in the south. The ancient city settlement of Rajghat falls under the Oṅkāra-Khaṇḍa with its highest plateau among the three, sloping gradually to the low inland ox-bow lakes of Mandākinī (modern Maidagin) and Matsyodarī (modern Machhodari).⁶ One can imagine the extent of the ancient city settlement of Varanasi after observing the elevated area which is mostly occupied by medieval and modern buildings. Varanasi also became famous by other names, such as Ānanda-Kānana, Avimukta, Mahāśmaśāna etc. The earliest settlement located at Rajghat was definitely extended upto Lat Bhairava and Bakaria Kund areas from where significant early historic remains, sculptures and architectural fragments have been found. *Kāśī-Khaṇḍa* and *Linga-Purāṇa* also mention about a pillar at Koṭīśvara and called Mahāśmaśāna-stambha which has been identified with Lat-Bhairava which was probably an Aśokan pillar, described to be of 32 to 34 feet in height by the French traveller Tavernier and which suffered damage in 1805.⁷

Although natural soil could not be reached in the excavations conducted at Rajghat in 1940, five strata were identified suggesting five successive cultural periods ranging from Śuṅga, Kushan-early Gupta, Gupta, late Gupta and Gāhaḍavāla age covering a deposit, approximately of 7 m in total.⁸

The Stratum I yielded medieval Brāhmaṇical sculptures and a large number of architectural fragments suggesting remains of a Gāhaḍavāla period (1086-1200 AD) temple there. Two copper plate inscriptions of Govindachandradeva were also found. Village Bhadapa is mentioned in one of them which can be identified with the modern Bhadaun, a locality near the site.

The II and III strata were found badly damaged by the Railway diggings.

Stratum IV contained the largest number of structures, at least eight brick-built buildings, laid out in blocks which were separated by lanes and alleys. A rectangular structure about 19 m from east to west and about 16.5 m across with a quadrangle open to sky and a pillared hall in the middle with apartments enclosing it on the sides was exposed. It might have been a temple. Other structures belonging to Stratum IV include a curious hall sunk with five masonry wells in its floor, a house containing a lime-plastered rectangular bathing tank, a house with an extensive paved court on which were found a pot with relief designs of flora and fauna, beside hundreds of clay sealings of which particularly important are the sealings of kings Dhanadeva and those bearing the representations of Greek gods and goddesses. On the basis of palaeography of the sealings this stratum has been assigned to the first to third centuries AD.⁹

6. Diana L. Eck, *Banaras-City of Light*, Penguin Books, New Delhi, 1993, p. 355.

7. Kuber Nath Sukul, *Varanasi-Vaibhava* (in Hindi), Bihar Rashtrabhasha Parishad, Patna, 1977, pp. 120-21.

8. Krishna Deva, *op cit*, pp. XLII-XLV.

9. *Ibid.*, p. XLIV.

10. *Ibid.*, p. XLV.

The Stratum V represents structures of four house-complexes grouped into two parallel blocks, representing common residential houses. The remarkable objects from the stratum include an ivory seal-matrix and a clay sealing inscribed respectively with legends *Phagunandisa* and *Balamitasa* in the Śuṅga style of Brahmi. A silver punch-marked coin was also found.¹⁰

The excavator had also sunk two test pits below the levels of Stratum V where he found 17 storage pottery jars and in the lower level of the pits he found "basket full of highly glazed potsherds of thin fabric and usually of black and occasionally deep brown colour. This pottery is so characteristic of the Maurya period and is known from the lowest strata of sites like Bhir Mound (Taxila) and Bhitta....."¹¹. The glazed ware apparently was Northern Black Polished Ware, a name of the pottery which was conceived later.

Besides hundreds of seals and sealings, the site revealed the find of several thousands of terracotta human and animal figurines, majority of which were found in the course of Railway diggings and a small number from the stratified levels during excavations. The excavator published only five of the terracotta figurines¹² and majority of them remained unpublished so far.

A note on the terracottas as extracted from the preliminary report by Krishna Deva is given below-

"Next to seals and sealings, the most interesting class of objects unearthed at Rajghat consists of human and animal terracotta figurines which turned up in several hundreds, displaying a rich variety of types. No doubt these were met with in all levels, but a greater abundance of these was in evidence in the Gupta strata which also yielded the finest specimens of this class. Among the figurines from the pre-Gupta strata is noticeable a curious admixture of completely modelled, partly cast and partly modelled and completely cast figurines, ranging from the crudest to fairly well executed types, evolved through several intermediate stages of progressive refinement. Unfortunately, no figurines came up from the Maurya and just a few from the Śuṅga level. The characteristic finds from the Śuṅga level are humans with broad and flat faces, animals stamped with rosettes and other patterns and votive tanks containing crude representations of humans, birds, snakes, ladder etc. The above-mentioned also came from the Kushan stratum which yielded, besides well finished sophisticated types, also degenerate archaic human types, some showing the limbs in bare outlines, others representing flattened bodies, pinched beak-like nose and wedge-shaped hands and feet. The process of refinement and sophistication of the terracotta art reached its zenith in the Gupta age which is illustrated by the numerous Rajghat specimens, in common with those already known from Bhita and Basarh. Invariably pressed out of moulds, these Gupta terracottas are characterized by sensuousness of modelling, exquisite grace of movement and posture, delicacy of expression and excellence of workmanship and finish. These terracottas share, in some measure, the amazing vitality and expressing qualities of the Gupta sculptural art. Another noteworthy feature is the fine painting of the lines and suitable colours, still preserved on some of the figurines. These show all variety of poses seated, standing, kneeling and reclining. Gods and goddesses, men and women, musicians and dancers, boys and children, soldiers and riders, animals and birds, - all varieties of subjects are depicted in multiple pleasing postures. We find on these such diverse themes as amorous couple engaged in love play, mother suckling the baby or hugging it to her bosom, young lady swinging in a cradle, rider galloping on a horse, monkey holding a fruit and so on. The religious figures include representations of Viṣṇu, Śiva, Kārttikeya, Gaṇeśa, groups of Kubera and Hārītī and

11. Ibid.

12. Ibid., pl. III.

Śiva and Pārvatī. Among animal figurines the bull and the horse with their lifelike modelling are particularly remarkable. More interesting than these and decidedly the most artistic are the numerous human heads and busts which deserve special notice. These show exquisitely refined and expressive features with prominent nose, full sensuous lips, large charming eyes, fine forehead and gliding cheeks,- all set in a beautiful oval face. The beauty of these heads is enhanced by the charming style of hairdressing which shows a bewildering variety from the simple unsophisticated parting of hair to the most gorgeous coiffure. The commonest style of hairdressing combines simple parting of hair with curly sidelocks. In this the hair is first parted from the middle in straight sweeps and is allowed to fall below the head in a bunch of short curls, reaching up to the ears on either side. A variety of this style shows the curls ending in a few broad volutes which are generally arranged in three parallel descending rows. An elaboration of the same style is seen in some specimens where the simple central parting is substituted by a wavy one, the rest being common. Next in frequency occurs a type of hairdressing, showing very minute curls arranged in the fashion of a honeycomb. This has numerous varieties. It may figure on the two sides of the head with or without a jewel (*maṇi*) in the central parting or may be continued all over the head. Then again its shape varies on different specimens. It is horn-like when it occurs on sides and is sometimes crescentic in shape. The arrangement of hair in the form of a wig or veil or tiara is also of frequent occurrence. Occasionally also find the hair dressed on one side, generally to left."¹³

An attempt has been made by the authors to select the important terracotta pieces from the collection of 1940 excavations of Rajghat by Krishna Deva and to bring them to light for the first time ever since more than 70 years passed after the excavations. These terracotta figurines are preserved in the Central Antiquity Collection of the Archaeological Survey of India, housed in Purana Qila, New Delhi. The Catalogue also contains the measurements of terracottas which the reader may be able to compare with the size of similar finds elsewhere.

- B.R. Mani

13. Ibid., pp. XLVIII-LI; see also V.S. Agrawala, *Journal of U.P. Historical Society*, Vol. XIV, Pt. I, p. I ff.

**CATALOGUE OF
HUMAN FIGURINES**



92439

Catalogue Of Terracotta Figurines From Rajghat Excavations (1940)



Fig. 1



Fig. 2



Fig. 3

Human Figurines

S. No.	Acc. No.	Site No.	Dimension L x B	Description and Remarks
1	62.31/19	RJ 373	8 x 4.5 cm	Typical Gupta bust of a figurine with trefoil headdress. Its eyes, lips and nose are prominent, and its ears are elongated with ear ornaments. It is moulded, with a flat back and is of dull red colour.
2	62.31/100		6.5 x 4 cm	This typical Gupta bust is holding some object in its right hand near the shoulder. Its eyes, nose and lips are shown very nicely, its head is covered with a turban and its ears are marked by <i>kunḍalas</i> , with a necklace hanging below. It is moulded with a flat back and is of dull red colour.
3	62.31/87		7 x 5 cm	This bust of a female with prominent eyes, nose and lips wears round <i>kunḍalas</i> as ear ornaments. Its headdress is damaged. It has a slender waist, prominent breasts and a beautiful blooming face fully round with prominent cheeks. It is of dull red colour and belongs to the Gupta period.



Fig. 4

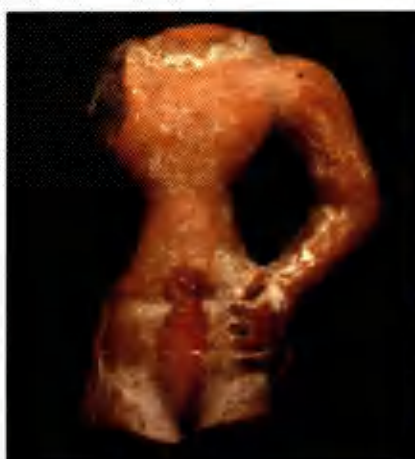


Fig. 5



Fig. 6

Human Figurines

S. No.	Acc. No.	Site No.	Dimension L x B	Description and Remarks
4	62.31/28		13 x 8 cm	This human head has prominent incised eyes, headdress and ears. Its ears are marked by pinholes for decoration. Its hair is shown by nail marks, and its leaf-shaped eyes with incisions. It has a prominent nose and its lips show a faint smile. There is a <i>jaṭā</i> -like decoration on its head, probably indicating Śiva(?). It is of deep bright red colour with traces of red slip.
5	62.31/73		8.5 x 6 cm	This headless torso of a male figurine with left hand placed on the slender waist has a flat back, and clearly-marked fingers. It is dull red with white painting.
6	62.31/74			This head portion probably depicts Śiva with a <i>jaṭā mukuṭa</i> . Its leaf-shaped eyes are marked with pinholes, its lips are deeply incised and its nose has two pinholes for nostrils. The ear-stud is round with pinholes while cheeks are prominent as if smiling. The lips are fluffy and bright red. It is of Kushan period.



Fig. 7



Fig. 8

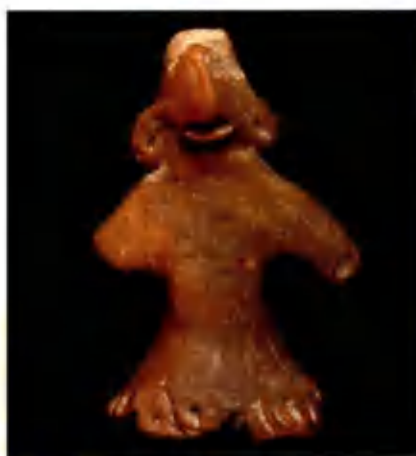


Fig. 9

Human Figurines

S. No.	Acc. No.	Site No.	Dimension L x B	Description and Remarks
7	62.31/46	RJ 73	6 x 9 cm	This figurine of Naigamesha with a flattened body, and hand pinched out with a hole at the top is probably handmade and is of dull red colour.
8	62.31/50		6.5 x 8.5 cm	This torso of a female figurine has right hand hanging below and the other placed on the waist. It has a flat back and is painted white .
9	62.31/52		9.5 x 5 cm	This pedestalled Naigamesha has pinched hands and is of dull grey colour.



Fig. 10a



Fig. 10b



Fig. 11a



Fig. 11b



Fig. 12

Human Figurines

S. No.	Acc. No.	Site No.	Dimension L x B	Description and Remarks
10	62.31/5	RJ 616	13 x 13.5 cm	Mother and child. Mother has prominent breasts, the child is seated on her left lap. She wears bangles and a necklace, and her navel is prominently depicted. One hand is holding the child while the right hand is on the other side. She is seated on a pedestal, and her head portion is missing. It is painted white and belongs to the Kushan period.
11	62.31/22	RJ 392	24 x 13 cm	Torso of a standing male figurine having its left hand on the waist. Folds of drapery with a waist band over the loin cloth can be clearly seen hanging below. Besides, it is wearing a necklace. One arm is broken.
12	62.31/89	RJ 690	8.5 x 4 cm	Mother and child with head missing. One hand hangs down while the other holds the child. The lower portion is also damaged. It is of dull red colour.



Fig. 13



Fig. 14



Fig. 15

Human Figurines

S. No.	Acc. No.	Site No.	Dimension L x B	Description and Remarks
13	62.31/68	RJ 645		Figurine depicting a soldier holding a sword and shield, wearing a cap and sporting a moustache. He appears like a foreigner. It is of dull red colour.
14	62.31/79	RJ 155	5.5 x 5.5 cm	Head with a trefoil headdress with marks of hair. It wears <i>kunḍalas</i> and is of red colour. It belongs to the Gupta period.
15	62.31/98	RJ 356	7 x 4 cm	This headless standing figurine with hands hanging down is of greyish colour.



Fig. 16



Fig. 17a



Fig. 17b



Fig. 18

Human Figurines

S. No.	Acc. No.	Site No.	Dimension L x B	Description and Remarks
16	62.31/70	RJ 699	10.5 x 9 cm	This head with protruding eyes and prominent nose wears round ear-studs with <i>jaṭā-mukūṭa</i> and has a faint smile on its lips. Its cheeks are prominent. It is of red colour.
17	62.31/72	RJ 186	9 x 6 cm	This pot-bellied figurine with thick legs and quite prominent sex organ stands on a stool. The upper portion of the figurine is damaged and missing. It is of dull red colour.
18	62.31/35	RJ 648	15.5 x 7.5 cm	This headless standing figurine is probably of Naigamesha. It has elongated ears, stumpy arms and a flat figure with long legs. It is of dull red colour.



Fig 19



Fig. 20



Fig. 21

Human Figurines

S. No.	Acc. No.	Site No.	Dimension L x B	Description and Remarks
19	62.31/30	RJ 217	12.5 x 10 cm	A head with a cap, <i>kunḍalas</i> and appliqué moustache. It has prominent eyes deeply incised and marked by holes. Its lips are also deeply incised and the ears are shown prominent with holes in the earlobes. It is of red colour.
20	62.31/36	RJ 389	7.5 x 3.8 cm	Terracotta plaque of a headless female. It stands on a lotus pedestal (?) and wears multiple bangles and anklets. There are marks of folds of drapery, a slender waist, and evidence of a typical Śunga style. There are faint traces of a necklace on the chest. It is small in size and is of dull red colour.
21	62.31/71		7.5 x 4.5 cm	This female head with trefoil headdress has a faint smile on the face. Its eyes are open and cheeks are prominent. It is of dull red colour and coarse in texture.



Fig. 22



Fig. 23



Fig. 24

Human Figurines

S. No.	Acc. No.	Site No.	Dimension L x B	Description and Remarks
22	62.31/12	RJ 164	4.5 x 5 cm	Female (?) with trefoil headdress with hole at the top. Made in typical Gupta style, it is of red colour.
23	62.31/39	RJ 809	9 x 8.5 cm	This headless human figurine has broken legs and one hand hanging while the other is on its waist. Its long fingers are nicely executed. It is of dull red colour.
24	62.31/88	RJ 277	7 x 4 cm	This headless standing figurine with a slender waist has one hand hanging below and the other placed on its waist. It wears a long dress, the traces of which are visible. It is of dull red colour.



Fig. 25



Fig. 26



Fig. 27

Human Figurines

S. No.	Acc. No.	Site No.	Dimension L x B	Description and Remarks
25	62.31/47		8 x 7 cm	This headless figurine is standing. Only one hand now survives only up to the wrist and fingers. It is greyish black with white painting.
26	62.31/53		6.5 x 3 cm	This star-shaped figurine has its head, arms and legs pinched out, and is of dull red colour.
27	62.31/26	RJ 685	10.5 x 7.5 cm	This figurine shows a bull's head between two human feet on a thin pedestal with clearly incised toes. The bull's head is prominent with two nostrils and a slit mouth. There are incised lines above the nose, probably representing Śiva. It is of red colour.



Fig. 28a



Fig. 28b



Fig. 29



Fig. 30

Human Figurines

S. No.	Acc. No.	Site No.	Dimension L x B	Description and Remarks
28	62.31/32		10 × 7 cm	A portion of a left hand holding some object (now broken) with a bangle and partly broken thumb, artistic fingers with beautifully depicted nails. It is of bright red colour with slip.
29	62.31/94		7 × 4.5 cm	A female figurine on a pedestal, standing possibly with a child in her lap. Its nose, eyes as well as the headdress are pinched-out.
30	62.31/54	RJ 103	10 x 9 cm	A standing female torso. Right hand hangs below and the other is placed on the waist. It is of dull red colour.



Fig. 31



Fig. 32



Fig. 33

Human Figurines

S. No.	Acc. No.	Site No.	Dimension L x B	Description and Remarks
31	62.31/21	RJ 597	8.5 x 7.2 cm	A headless torso of a female with appliqué pellets as its waist band.
32	62.31/60	RJ 216	6 x 4 cm	A handmade figurine with blunt, stumpy arms and legs, its face pinched out and of dull red colour.
33	62.31/83		4 x 3.8 cm	Torso of a female figurine with prominent breasts and slender waist. Traces of a necklace are visible. It is of red colour.



Fig. 34



Fig. 35



Fig. 36

Human Figurines

S. No.	Acc. No.	Site No.	Dimension L x B	Description and Remarks
34	62.31/62	RJ 711	6 × 4.5 cm	A handmade figurine with all the parts of the body (head, limbs and legs) pinched out. There are deep incisions on the legs, arms, holes for eyes and a slit mouth. It is of dull red colour.
35	62.31/15	RJ 823	6 x 3.8 cm	A bust of a female (?) with a conical headdress and left hand akimbo. In her right she holds some object. Slight traces of ear ornament are visible. It is moulded and is of dull red colour.
36	62.31/8	RJ 77	5 x 3.2 cm	Bust of a female with trefoil headdress. It is moulded and is of dull red colour.



Fig. 37



Fig. 38



Fig. 39

Human Figurines

S. No.	Acc. No.	Site No.	Dimension L x B	Description and Remarks
37	62.31/61		8.5 x 3 cm	Standing female figurine with left hand akimbo and the right hanging down. Slight traces of trefoil hairstyle are visible, the dress covers the head. It is moulded and is of dull red colour.
38	62.31/97	RJ 224	8.5 x 6 cm	Bust of a female with prominent breasts and beaked features. Its headdress is raised from the back. The ears are incised and the hands are broken. It is handmade and is of dull red colour.
39	62.31/75	RJ 75	8 x 4.2 cm	Handmade pedestalled figurine with conical headdress, stumpy arms (one broken), eyes indicated by holes and prominent ears, nose and lips. It is of bright red colour.



Fig. 40



Fig. 41a



Fig. 41b



Fig. 42

Human Figurines

S. No.	Acc. No.	Site No.	Dimension L x B	Description and Remarks
40	62.31/93	RJ 60	7.5 x 4 cm	Standing headless figurine on a pedestal with bulging belly, one hand hanging and the other holding some object and placed on the left thigh. It has prominent breasts and is of red colour.
41	62.31/34	RJ 236		Female figurine with prominent breasts is seated on a flat stool. It is shown by projected back. It has hands pinched out, a beak-like nose, and mouth marked by pressing the thumb. Its legs are in seated position and spread in front with marks of thumb to indicate fingers and feet. It is of dull red colour.
42	62.32/17	RJ 333	13 x 9.5 cm	Large female figurine with rounded head and face with a headdress and a flat back. There are two perforations in the head portion. Perhaps this indicates that the body was made separately and joined with the head portion. It is of dull red colour.



Fig. 43



Fig. 44



Fig. 45

Human Figurines

S. No.	Acc. No.	Site No.	Dimension L x B	Description and Remarks
43	62.31/37	RJ 218	9.5 x 8.5 cm	Headless Naigamesha is badly damaged and is of dull red colour.
44	62.31/96	RJ 672	9.5 x 5.5 cm	Torso of a figurine, is badly damaged and is of dull red colour.
45	62.31/13	RJ 808	5 x 8 cm	Bust of Naigamesha, has stumpy arms and a raised headdress with perforations. It is of dull red colour.



Fig. 46



Fig. 47



Fig. 48

Human Figurines

S. No.	Acc. No.	Site No.	Dimension L x B	Description and Remarks
46	62.31/84	RJ 305	7.2 x 6.5 cm	Torso of a female with prominent breasts and necklace. Some object is held in her right hand, which is beautifully moulded. Perhaps she holds the folds of drapery in her left hand. There are traces of a waist band and prominent sex organ. It is of dull red colour.
47	62.31/24	RJ366		Head with prominent eyes, nose (now damaged) and lips, has a <i>jaṭā</i> marked with incisions. Perhaps it represents Śiva. It has a bright red slip and belongs to the Gupta period.
48	62.31/82		6.5 x 6 cm	Bust of a female figurine with prominent breasts (one now damaged), nipple is made with punched circle. Its stumpy arms are pinched out, and one is now broken. The nose is pinched. It is handmade and has diamond-shaped eyes incised with circle. It wears a flat headdress and is of dull red colour.



Fig. 49



Fig. 50



Fig. 51

Human Figurines

S. No.	Acc. No.	Site No.	Dimension L x B	Description and Remarks
49	62.31/18		3 x 2.2 cm	Hollow head of a female with a <i>ṭīkā</i> on its forehead, has a small head with indication of eyes, nose, lips and eyebrows. It is moulded and is of dull red colour.
50	62.31/77	RJ 856	5.8 x 3.5 cm	Bust of a female with lower portion broken, is of dull red colour.
51	62.31/42		6 x 6 cm	Bust of a male figurine with a cap like <i>ushnīsha</i> . It has <i>kunḍalas</i> in its ears and faint traces of eyes, nose and lips. It is of dull red colour.



Fig. 52a



Fig. 52b



Fig. 53



Fig. 54

Human Figurines

S. No.	Acc. No.	Site No.	Dimension L x B	Description and Remarks
52	62.31/41		3.5 x 3 cm	Female head with beautiful appliqué hairstyle is typical of the Gupta style. It is of dull red colour.
53	62.31/66		3.8 x 5 cm	Head of a female figurine with beautiful headdress that resembles a bun with a hole. It has a flat back, it is moulded and is of dull red colour, of Gupta period.
54	62.31/48		7.5 x 4.5 cm	Moulded Gaṇeśa holding a <i>modakapātra</i> in his left hand and some object in his right. The figurine is seated with faint traces of waist band and drapery. It is of red colour.



Fig. 55



Fig. 56



Fig. 57

Human Figurines

S. No.	Acc. No.	Site No.	Dimension L x B	Description and Remarks
55	62.31/38		4.5 x 5 cm	Lower portion (upper half missing) of standing <i>mithuna</i> with folds of drapery and traces of anklets still visible. The male figure holds drapery in one hand and the female has her hand hanging below. It is made from a single mould and is of greyish colour.
56	62.31/56		7.5 x 4.5 cm	Standing pot-bellied torso with right hand holding traces of drapery tied with a waist band. It is of dull red colour.
57	62.31/90		5 x 4 cm	Moulded, headless figurine with folded hands is perhaps seated, and is of blackish red colour.



Fig. 58



Fig. 59



Fig. 60

Human Figurines

S. No.	Acc. No.	Site No.	Dimension L x B	Description and Remarks
58	62.31/85		4.8 x 6 cm	Headless torso of a male with one arm broken and the other akimbo is perhaps seated and is of dull red colour.
59	62.31/57	RJ 19	8.5 x 5.2 cm	Naigamesha with stumpy arms that are now broken (?), hole at the top. It is of dull red colour.
60	62.31/51			Fragmentary seated (?) figurine of greyish colour.



Fig. 61



Fig. 62a



Fig. 62b



Fig. 63

Human Figurines

S. No.	Acc. No.	Site No.	Dimension L x B	Description and Remarks
61	62.31/45		5 x 2.5 cm	Crude, handmade figurine with stumpy arms and legs which are badly damaged. Its head portion is pinched out. It is of grey colour.
62	62.31/99		8 x 4.2 cm	A monkey-like figure with folded hands, perhaps holding some object. The seated figure's lower portion is now broken. It has prominent ears and is of greyish red colour.
63	62.31/44		8.5 x 5 cm	A handmade, crude figurine with stumpy arms and legs. Its head is pinched out. It is of dark grey colour.



Fig. 64



Fig. 65



Fig. 66

Human Figurines

S. No.	Acc. No.	Site No.	Dimension L x B	Description and Remarks
64	62.31/8			Pedestalled female figurine with pointed and prominent breasts, and its nose pinched out. It has stumpy arms, is handmade and is of dull red colour.
65	62.31/58		7.5 x 4.5 cm	Female figurine standing on a flower, which is perhaps a water lily or lotus. It is moulded, badly weathered, and of grey colour.
66	62.31/91		6 x 4.5 cm	Moulded (single) seated figurine with arms held near the chest. It is of grey colour.



Fig. 67



Fig. 68



Fig. 69

Human Figurines

S. No.	Acc. No.	Site No.	Dimension L x B	Description and Remarks
67	62.31/20	RJ 383	11 x 6.5 cm	Headless standing male figurine with its right arm holding a portion of its upper garment near the belly and its left hand holding the drapery. It is wearing a coat-like upper garment, with thick folds of drapery on the waist. It is perhaps clad in <i>dhotī</i> , is moulded and is of dull red colour.
68	62.31/63			A crude, handmade figurine with stumpy limbs, head pinched out and eyes marked by pressing and pinching. It is of dull red colour.
69	62.31/11	RJ 836	6 x 3.5 cm	A typical Gupta bust with parted hair, elaborate hairstyle and headdress and <i>kunḍalas</i> in the ears. There are faint traces of smile on her face. It is of dull red colour.



Fig. 70



Fig. 71



Fig. 72

Human Figurines

S. No.	Acc. No.	Site No.	Dimension L x B	Description and Remarks
70	62.31/86		8.5 x 5.7 cm	Torso of a female (?) figurine with one hand hanging down and the left hand held near the chest. Traces of folds of drapery are visible. It is of dull red colour.
71	62.31/43		9 x 8.5 cm	Bust with necklace, ear ornaments and eyes all pelleted separately and marked by pinholes. It is handmade, with stumpy arms, a nose pinched out with two nostrils, an incised mouth and a conical bun-like headdress.
72	62.31/25		7.5 x 3.5 cm	Female bust with left arm intact upto the elbow, elongated ear ornaments, a slender waist, perforation at the top of the hairdress and faint traces of smile. It is moulded and is of grey colour.



Fig. 73



Fig. 74



Fig. 75

Human Figurines

S. No.	Acc. No.	Site No.	Dimension L x B	Description and Remarks
73	62.31/5	RJ 205	10 x 7.2 cm	Bust holding either a child or some object. It has very clearly marked fingers with a spiral, conical headdress and prominent eyes made by incision and holes. Its nose, eyebrows and lips are marked finely. It wears a necklace with nail marks and ear ornaments. The figurine is weathered, and its navel is marked by pinholes. It is of dull red colour.
74	62.31/80		5 x 4.8 cm	Unidentified pot-bellied female (?) of dull red colour.
75	62.31/10		6 x 5.5 cm	Female bust with prominent pointed breasts and marks of eyes and nose applied separately. It has stumpy arms and is grey coloured.



92439



Fig. 76



Fig. 77



Fig. 78

Human Figurines

S. No.	Acc. No.	Site No.	Dimension L x B	Description and Remarks
76	62.31/67		6.5 x 3 cm	This standing female figurine is badly weathered. It is moulded and is of dull red colour.
77	62.31/76		5 x 3.5 cm	Bust of a female figurine holding some object in her right hand, near the shoulder. A long necklace is visible as are traces of ear ornaments and indications of ears, eyes, nose and lips, and traces of bangles. It is moulded, is of dull red colour and belongs to the Gupta period.
78	62.31/171	RJ 108	8.5 x 6.5 cm	A handmade headless torso of a female figurine with only one breast and left arm now extant. The one arm shows an armlet. The rest of the figurine below is damaged. Appliqué pellets with pinholes occur as the waist band. The legs below the thigh are damaged. It is of dull red colour.



Fig. 79



Fig. 80



Fig. 81

Human Figurines

S. No.	Acc. No.	Site No.	Dimension L x B	Description and Remarks
79	62.31/106		6.5 x 4.7 cm	Seated human figurine with folded hands near its chest. It is moulded and its legs are placed on a pedestal, folded at the knee and head missing. It is of red colour.
80	62.31/189	RJ 321	4 x 3 cm	A hollow, moulded head portion having round face with protruding eyes, lips and nose with two nostrils. Its eyebrows are also marked clearly and its ears are slightly out-curved. Faint traces of parted hair are visible. It is of dull red colour.
81	62.31/131		6 x 3.7 cm	Male head (Śiva?) with beaded decoration on the head portion, closed eyes and a <i>jaṭā</i> -like hair style. It has a very serene look with a faint smile on his full lips. It is a typical Gupta moulded piece, of dull red colour.



Fig. 82



Fig. 83



Fig. 84

Human Figurines

S. No.	Acc. No.	Site No.	Dimension L x B	Description and Remarks
82	62.31/125	RJ 918	6.5 x 4 cm	Seated headless male figurine with folded hands, and legs placed on a pedestal. It is of dull red colour.
83	62.31/182	RJ 344	9 x 10 cm	The feet of a figurine with clear indication of fingers and nails. It wears thick anklets, but the portion above the feet is damaged. The feet are placed on a flat pedestal. This might have been a part of a larger figurine. It is red in colour.
84	62.31/126	RJ 225	6.5 x 4 cm	Torso of a female figurine with hands hanging down to the thigh. The head and legs of this standing figurine are broken. It is of dull red colour.



Fig. 85



Fig. 86



Fig. 87

Human Figurines

S. No.	Acc. No.	Site No.	Dimension L x B	Description and Remarks
85	62.31/135	RJ 839	3.5 x 3.8 cm	The head of a female figurine wearing <i>kuṇḍalas</i> and a string-like beaded ornament on the forehead. It has a very serene look with downcast eyes. The headdress is quite prominent. Traces of the head dress fall on both sides on the shoulders. The portion below the shoulder is broken. It is of dull red colour.
86	62.31/153	RJ 80	4.5 x 3.5 cm	Aśvamukhī yakshī, perhaps the consort of Hayagrīva. This is a typical Gupta figurine. The bust with breasts survive. The figurine wears a beaded necklace, its eyes and mouth are clearly indicated with the traces of the headdress. It is of dull red colour.
87	62.31/129	RJ 91	5 x 3.5 cm	Seated figurine with folded hands and its legs are placed on a pedestal. It is of greyish colour.



Fig. 88



Fig. 89



Fig. 90

Human Figurines

S. No.	Acc. No.	Site No.	Dimension L x B	Description and Remarks
88	62.31/142	RJ 570		A male figurine with <i>jaṭā</i> having a hole at top. Its legs are now broken, while the right arm is raised near the shoulder, and is perhaps holding some object. The left hand hangs down. It is of dull red colour.
89	62.31/62	RJ 379	9.5 x 5 cm	Head with a bun on the top, which might be a capped headdress. It wears <i>kuṇḍalas</i> in its ears. Its nose and lips are prominent and its eyes are closed. It is moulded and is of dull red colour.
90	62.31/172		8 x 4.3 cm	Standing headless female with hands hanging down. Its fingers are clearly indicated. It stands on a pedestal and wears a long diaphanous dress which is clearly marked above the feet. There are faint traces of a waist band. It is moulded and of dull red colour.



Fig. 91



Fig. 92



Fig. 93

Human Figurines

S. No.	Acc. No.	Site No.	Dimension L x B	Description and Remarks
91	62.31/111	RJ 335	8.5 x 4.5 cm	Standing female figurine with its left arm placed on the waist. It wears a long dress, the traces of which can be seen clearly. The fingers on the waist are clearly marked. A wristlet is worn on the wrist. It is of dull red colour.
92	62.31/132	RJ 386	7.3 x 4 cm	Standing headless female figurine with hands hanging down near the thigh. One arm is damaged. It stands on a pedestal. The fingers are clearly marked. It is of dull red colour with white painting all over.
93	62.31/103	RJ 731	8 x 2.3 cm	Standing female figurine with left arm akimbo. It is badly weathered and is of dull red colour.



Fig. 94



Fig. 95



Fig. 96

Human Figurines

S. No.	Acc. No.	Site No.	Dimension L x B	Description and Remarks
94	62.31/105	RJ 935	5 × 3.8	Head (Śiva) with typical Gupta features. There is a hole on the top with headdress, which is in the form of <i>jaṭā</i> and is tied with a band. Its eyes are closed in meditation. It has full lips, wears a <i>kuṇḍala</i> , and is of dull red colour.
95	62.31/40	RJ 855	6.5 x 4.4 cm	It is a red colour terracotta head with half-closed eyes, prominent but chipped off nose, thick lips and elongated ears having large earrings. The hair is tied in a bun to the left with a circular flower in the centre. Its sex is unidentified. It belongs to the Gupta period.
96	62.31/175	RJ 557		Bust of a female figurine with trefoil headdress. It wears <i>kuṇḍalas</i> and a necklace. Its other features are not clear. It is of dull red colour.



Fig. 97



Fig. 98



Fig. 99

Human Figurines

S. No.	Acc. No.	Site No.	Dimension L x B	Description and Remarks
97	62.31/161	RJ 120	5 x 2.5 cm	A handmade figurine with stumpy limbs, head, eyes and nose pinched out, and with red slip.
98	62.31/164		4.2 x 2.5 cm	Same as above in dull red colour.
99	62.31/133		5.5 x 3 cm	Torso of a male figurine with its right hand akimbo and the left hanging down to the knee. It is moulded, and of dull red colour.



Fig. 100



Fig. 101



Fig. 102

Human Figurines

S. No.	Acc. No.	Site No.	Dimension L x B	Description and Remarks
100	62.31/155	RJ 833	3 x 2.7 cm	The head of a human figurine with full lips as if smiling. Traces of headdress flow on two sides. This is a typical Gupta figurine of dull red colour.
101	62.31/107	RJ 388	4.5 x 4 cm	A head with almost the same headdress as above with features much obliterated. It is dull red in colour.
102	62.31/144			A small, handmade figurine with stumpy limbs and red in colour.



Fig. 103



Fig. 104



Fig. 105a



Fig. 105b

Human Figurines

S. No.	Acc. No.	Site No.	Dimension L x B	Description and Remarks
103	62.31/136			A small, handmade figurine with stumpy limbs and red in colour.
104	62.31/115	RJ 861	6 x 4.5 cm	Plaque showing torso of a female with right arm raised and the other akimbo. There is some indication of necklace and armlets. It is badly damaged and is dull red in colour.
105	62.31/31		12 x 10 cm	Bust of a female form is headless and has prominent breasts with pinholes for nipples. Its necklace is deeply incised with nail marks. Two arms are now broken. Its back has traces of hair in stresses with the lower end tied in a knot. This hollow figurine is grey in colour which is highly shining.



Fig. 106



Fig. 107



Fig. 108

Human Figurines

S. No.	Acc. No.	Site No.	Dimension L x B	Description and Remarks
106	62.31/194		10 x 7 cm	The head of a human figurine with protruding eyes having pinholes, and a prominent nose, ears and lips. Its hair is tied in a knot, and it wears ear ornaments and an elaborate headdress. It is red in colour and belongs to the Kushan period.
107	62.31/190	RJ 190	13.5 x 7.2 cm	Head of a figurine with elaborate headdress which is slightly broken. The headdress, ear ornaments and eyes are quite prominent. It is dull red in colour and belongs to the Kushan period.
108	62.31/179		11 x 13 cm	The leg of a seated human figurine with a thick anklet and toes marked by deep incisions. It is dull red in colour.



Fig. 109



Fig. 110



Fig. 111

Human Figurines

S. No.	Acc. No.	Site No.	Dimension L x B	Description and Remarks
109	62.31/177		7 x 5 cm	Seated figurine wears a <i>dhotī</i> tied by a waist band (clearly visible at the back) with a hollow space at the neck for inserting the tenon of the head portion. Its sex organs are clearly marked. One hand (left) is placed near the thigh and the right hand is holding some object or is in <i>abhaya-mudrā</i> placed near the chest. The folds of its <i>dhotī</i> are visible near the thigh. It is pot bellied. The back is prominent and the curves of the body are shown clearly. It wears bangles or wristlets and is red in colour.
110	62.31/122		6.5 x 5.5 cm	Lower portion of a plaque probably showing the tusk of an elephant. It is not identifiable and is greyish in colour.
111	62.31/193		8.5 x 9.5 cm	The broken head portion with only the hair style extant. It is marked by a <i>tilaka</i> and its ears wear elaborate <i>kunḍalas</i> . It is hollow and dull red in colour. The hair is marked by deep incisions.



Fig. 112



Fig. 113



Fig. 114

Human Figurines

S. No.	Acc. No.	Site No.	Dimension L x B	Description and Remarks
112	62.31/183	RJ 83	7 x 9.2 cm	Lower portion of Mahishamardini, showing the goddess trampling <i>Mahisha</i> . Her left leg is shown with an anklet and she holds the tail of the animal-demon. <i>Mahisha</i> folds his leg in fear and one leg of goddess is placed on the back of the animal. This beautifully depicted piece is dull red in colour.
113	62.31/165		5 x 2.9 cm	Small, handmade figurine with stumpy arms and legs, and pinched nose. It is red in colour with traces of red slip.
114	62.31/162		7.3 x 3.7 cm	Standing figurine, with faint traces of her dress visible. She stands on a pedestal with her right hand hanging down to the thigh and the left arm akimbo. It is moulded and dull red in colour.



Fig. 115



Fig. 116



Fig. 117

Human Figurines

S. No.	Acc. No.	Site No.	Dimension L x B	Description and Remarks
115	62.31/185	RJ 114	3.5 x 6.5 cm	Headless female torso with prominent breasts. It is badly damaged and is grey in colour.
116	62.31/113	RJ 161		Torso of a female figurine with one hand hanging right down to the thigh. It has a slender waist and appears to be wearing a dress. It is moulded and is of dull red colour.
117	62.31/141	RJ 64	4.5 x 3.5 cm	The head of a female (?) with a bun on the head. Its ears are prominent with <i>kunḍalas</i> , but is extant only up to the neck. Other features are obliterated. It is moulded and dull red in colour.



Fig. 118



Fig. 119



Fig. 120

Human Figurines

S. No.	Acc. No.	Site No.	Dimension L x B	Description and Remarks
118	62.31/124	RJ 875	5.5 x 3.5 cm	The head of a human figurine with traces of curly hair falling on two sides. It wears a cap-like headdress. A <i>kunḍala</i> is visible in the left ear but features are obliterated. It is dull red in colour.
119	62.31/148		3.8 x 2.2 cm	A head with a long headdress that has two perforations. The figurine has prominent eyes but its other features are now obliterated. It has a round face and is of dull red colour.
120	62.31/186	RJ 57	6.8 x 6.3 cm	A leg with prominent toes resting on a thin pedestal, decorated with a thick anklet. It is red in colour.



Fig. 121



Fig. 122



Fig. 123

Human Figurines

S. No.	Acc. No.	Site No.	Dimension L x B	Description and Remarks
121	62.31/109	RJ 343	10 x 6.5 cm	Torso of a female figurine with left arm akimbo. It shows traces of drapery, and has a slender waist with a waist band, now obliterated. Its fingers are clearly indicated. It is dull red in colour.
122	62.31/102	RJ 287	7.5 x 4.5 cm	Torso of a female. Her right hand holds some object, perhaps a flower, near her bosom. She wears an armlet and a plain necklace. Traces of a dress on her left are visible. The figurine is very delicately rendered. It is red in colour.
123	62.31/101	RJ 610	9.5 x 3.8 cm	A standing male figurine with arms, has its head broken. It stands on a pedestal. Folds of drapery are clearly visible tied around the waist in a knot to his left. Marks of drapery are further seen on its legs. The figurine wears a broad necklace and has a slender waist. It is of dull red colour.



Fig. 124



Fig. 125



Fig. 126

Human Figurines

S. No.	Acc. No.	Site No.	Dimension L x B	Description and Remarks
124	62.31/130		4.2 x 2.5 cm	A plaque showing a male with bun on his head and parted hair. Only the head is extant. It has <i>kunḍalas</i> in its ears. The figurine is typical of the Gupta stlye. It is dull red in colour.
125	62.31/108	RJ 858	7.8 x 3.5 cm	Bust of a female(?) with a slender waist and typical Gupta curls having a hole and parted hair falling on either sides of the head. She wears <i>kunḍalas</i> . There are faint traces of smile on her face. The figurine is moulded and dull red in colour.
126	62.31/124	RJ 385		A Naigamesha type bust with circular ear ornaments with holes. Its headdress consists of a perforation. The figurine appears to be handmade with a mouth indicated by nail marks and a pinched nose. It is grey in colour.



Fig. 127



Fig. 128



Fig. 129

Human Figurines

S. No.	Acc. No.	Site No.	Dimension L x B	Description and Remarks
127	62.31/181		3.8 x 4 cm	The torso of a female with hands hanging down and head missing. It is dull red in colour.
128	62.31/104	RJ 648	6 x 4.5 cm	The headless portion of a standing male surviving only below waist. Its left arm is akimbo and the right arm hangs down. It is moulded and dull red in colour with white painting. The figurine is quite coarse.
129	62.31/151	RJ 324		A handmade male figurine with stumpy limbs. Its head is pinched out. The nose, too, is slightly pinched out while the ears are slightly projected. It is red in colour.



Fig. 130



Fig. 131



Fig. 132

Human Figurines

S. No.	Acc. No.	Site No.	Dimension L x B	Description and Remarks
130	62.31/117	RJ 168	14 x 5 cm	A standing Naigamesha (with its right side damaged) with an elongated ear that is pierced. One of its legs is broken. Its mouth is incised and nose made prominent by pinching. It is of dull red colour.
131	62.31/155	RJ 833	3.5 x 3 cm	A head with typical Gupta curls. This small, moulded piece with closed eyes and thick lips is dull red in colour.
132	62.31/128		5 x 3.5 cm	Same as above but badly obliterated. It is dull red in colour.



Fig. 133



Fig. 134



Fig. 135

Human Figurines

S. No.	Acc. No.	Site No.	Dimension L x B	Description and Remarks
133	62.31/195	RJ 544	5 x 6 cm	A fragmentary head with a beautifully executed hair style. Its eyes are chiselled with holes and its nose is prominent. It is moulded and has a red slip.
134	62.31/184		14 x 8.5 cm	A thick, handmade female figurine with prominent breasts and a necklace with deep incisions. Its legs are now broken and its other features are obliterated. It is of dull red colour.
135	62.31/176		4 x 3.5 cm	The head of Naigamesha with long ears with incisions. These may indicate ornaments. Its nose is pinched out and mouth is chiselled. It has a headdress and is red in colour.

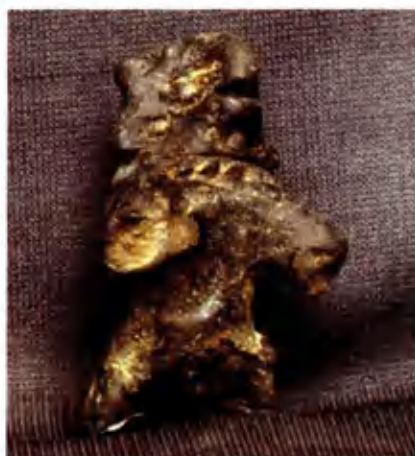


Fig. 136



Fig. 137



Fig. 138

Human Figurines

S. No.	Acc. No.	Site No.	Dimension L x B	Description and Remarks
136	62.31/173		6 x 4 cm	A handmade figurine with a pinched nose, slit mouth, and incised eyes with holes inside. Its necklace is visible and ear ornaments are also quite prominent. It is perhaps seated and has stumpy limbs. It is greyish black in colour.
137	62.31/16		4 x 4.5 cm	A moulded male head with rosette hair style on the forehead to the left. The features show puffy cheeks with a faint smile on its face. It is red in colour.
138	62.31/119	RJ 445	6 x 4.5 cm	A handmade female figurine with prominent breasts and stumpy limbs (probably) It is dull red in colour.



Fig. 139



Fig. 140



Fig. 141

Human Figurines

S. No.	Acc. No.	Site No.	Dimension L x B	Description and Remarks
139	62.31/137		5 x 4.5 cm	A handmade figurine with stumpy limbs. It is grey in colour.
140	62.31/188	RJ 504	5.5 x 4 cm	A headless female figurine with broken arms and prominent breasts. It is extant up to its slender waist. It is moulded in the Gupta style and is dull red in colour.
141	62.31/149	RJ 921	4.5 x 2.5 cm	A bust of Naigameshi with typical features, hole on the top and is grey in colour.



Fig. 142



Fig. 143



Fig. 144

Human Figurines

S. No.	Acc. No.	Site No.	Dimension L x B	Description and Remarks
142	62.31/146	RJ 632	7.8 x 3.5 cm	A handmade male figurine with stumpy arms and broken legs. It has prominent eyes with holes and deep incisions. It is dull red in colour.
143	62.31/147	RJ 74	5 x 4 cm	A handmade figurine with stumpy limbs, this has a pinched head and nose, and a slit mouth. It is dull red in colour.
144	62.31/150	RJ 287	6 x 4 cm	A handmade figurine with features as above.



Fig. 145



Fig. 146



Fig. 147

Human Figurines

S. No.	Acc. No.	Site No.	Dimension L x B	Description and Remarks
145	62.31/157	RJ 760	6.5 x 3.8 cm	Handmade female figurine, perhaps seated, with prominent eyes, nose, slit mouth, and ears. It wears a necklace and has stumpy arms. It is red in colour.
146	62.31/170		5 x 1.8 cm	A small figurine standing on a pedestal with its left arm akimbo and the right hanging down. It is headless and grey in colour.
147	62.31/178	RJ 70	12 x 5.5 cm	A fragmentary hand with a series of bangles, two of which are incised and one plain. The fingers are clearly marked with nails, with bright red slip.



Fig. 148



Fig. 149



Fig. 150

Human Figurines

S. No.	Acc. No.	Site No.	Dimension L x B	Description and Remarks
148	62.31/156	RJ 757	9.5 x 8 cm	A damaged and worn-out bust of a male with a cross band on the chest. Its hands are now broken, but they were perhaps stumpy when extant. Its features are obliterated. This thick, handmade figurine is of a dull red colour.
149	62.31/151		6 x 4.5 cm	A leg that wears an incised anklet. Its toes are clearly marked. It is of dull red colour.
150	62.31/110		10 x 5 cm	A handmade bust with a conical headdress and circular appliqué eyes with pinholes. Its face is pinched out and the left hand holds some object. The portion below the waist is broken. It has a pressed mouth. It is a very coarse figurine, dull red in colour.



Fig. 151



Fig. 152



Fig. 153

Human Figurines

S. No.	Acc. No.	Site No.	Dimension L x B	Description and Remarks
151	62.31/114	RJ 68	11 x 8.5 cm	A figurine with its lower portion missing. Its eyes are marked by holes. It has a pressed open mouth, and a pinched nose, which is now damaged. Its left hand holds some object while the right hand is broken. It is coarse and of dull red colour.
152	62.31/118		9.5 x 6.8 cm	The torso of a female figurine with prominent breasts with its arms and legs broken. It is moulded, has a slender waist and broad hips, and is of dull red colour.
153	62.31/5		10.6 x 7.1 cm	It is a quite remarkable red colour figurine of a human male with its portion below waist missing. It has prominent eyes with pupils clearly marked, a prominent nose (chipped off) and beautiful lips. It has round <i>kunḍalas</i> in its elongated ears. Over its head a peculiar decoration is visible which might be actually to indicate a crown. The figure also wears a broad torque with alternating grooves. Its right hand is broken at the elbow whereas the left hand is completely broken. There is a certain expression of calmness on its face which is typical of Gupta style.



**CATALOGUE OF
ANIMAL FIGURINES**



Fig. 1



Fig. 2



Fig. 3

Animal Figurines

S. No.	Acc. No.	Site No.	Dimension L x B	Description and Remarks
1	89.4/8	RJ 233	8 x 7 cm	Bird on a pedestal. It has a thin body and its features are not clear. Its tail is flat and prominent, probably part of the corner decoration of a votive tank. It is of dull red colour.
2	89.4/6	RJ 786	6.5 x 4 cm	A rattle bird with two parallel holes. It is of dull red colour.
3	62.12/4	RJ 276		A pedestalled bird of dull red colour.



Fig. 4



Fig.5



Fig.6

Animal Figurines

S. No.	Acc. No.	Site No.	Dimension L x B	Description and Remarks
4		CAC RJ 8	7 x 8 cm	A winged bird. Its head and tail are damaged. It is red in colour.
5		RJ 517		A fragmentary pedestalled bird, dull red in colour.
6		CAC RJ 11	6 x 2 cm	A fragmentary bird with a pointed beak. It is dull red in colour.



Fig. 7



Fig. 8



Fig. 9a



Fig. 9b

Animal Figurines

S. No.	Acc. No.	Site No.	Dimension L x B	Description and Remarks
7	89.4/15	RJ 503	8 x 5 cm	A fragmentary rattle bird with a bulbous body and a deep depression and incision near its tail. It is dull red colour.
8	89.4/11		5.5 x 5 cm	A fragmentary pedestalled bird with a pointed beak, probably part of the corner decoration of a votive tank and is dull red in colour.
9	89.4/12		5 x 5.5 cm	A winged bird with deep notchings on its wings and tail. It has two deep holes for eyes, perhaps attached to a votive tank.



Fig. 10



Fig. 11



Fig. 12

Animal Figurines

S. No.	Acc. No.	Site No.	Dimension L x B	Description and Remarks
10	89.4/14		4 x 3.5 cm	Similar as No. 9 but smaller.
11	89.4/9	RJ 557	5 x 5.5 cm	A fragmentary pedestalled bird with a pointed and projected beak. It is dull red in colour.
12	89.4/2		7 x 6 cm	A pedestalled bird with prominent wings, tail and beak. It has a thin body, probably part of the corner decoration of a votive tank, and is dull red in colour.



Fig. 13



Fig. 14



Fig. 15

Animal Figurines

S. No.	Acc. No.	Site No.	Dimension L x B	Description and Remarks
13	89.4/10	RJ 650	7 x 6 cm	A pedestalled bird with a fragmentary tail. It has a prominent beak and projected wings, probably part of the corner decoration of a votive tank. It is dull red in colour.
14	89.4/23		8.5 x 6.5 cm	A fragmentary humped bull with a projected mouth. Only one leg is extant, and projected outwards. There are depressions for eyes whereas the horns are projected. It is dull red in colour.
15	62.32/107	RJ 71101	11 x 9 cm	A horse figurine of dull red colour. Its front legs are broken while the pointed legs at the back are projected outwards. Its projected mouth is partly broken.



Fig. 16



Fig. 17



Fig. 18

Animal Figurines

S. No.	Acc. No.	Site No.	Dimension L x B	Description and Remarks
16	62.32/56		9 x 6.5 cm	A humped bull with thick legs projected outwards. Its prominent hump is shown by pinching with depression on the top. A depression is also marked to show the tail.
17		CAC RJ 9	5 x 5.5 cm	Head of a bull with a prominent snout and deep incision to indicate mouth. It has pelleted eyes with deep holes and its horns are now broken. It is dull red in colour.
18	89.4/22		4 x 2 cm	A small tortoise with perforations for eyes. There is a blind hole on top of the figurine. It is of dull red colour.



Fig. 19



Fig. 20



Fig. 21

Animal Figurines

S. No.	Acc. No.	Site No.	Dimension L x B	Description and Remarks
19	89.4/5	RJ 863	7 x 5 cm	A pedestalled bird, slightly damaged, with a prominent pinched out beak, probably part of a corner decoration of a votive tank. It is dull red in colour.
20	89.4/13	RJ 465	5.5 x 4.5 cm	Bird with hole on the head and incision on the tail and wings. It has a pinched out beak that is quite prominent. It probably formed part of decoration on a votive tank. There is some use of red slip.
21		RJ 615	9 x 5 cm	A fragmentary bird with a prominently pinched out beak. Its eyes are shown by appliqué circlets with holes in the centre. It was probably made with wheels and is of dull red colour.



Fig. 22



Fig. 23



Fig. 24

Animal Figurines

S. No.	Acc. No.	Site No.	Dimension L x B	Description and Remarks
22	89.4/10		9 x 8 cm	An animal with two circlets as eyes marked by two holes. It has a prominent snout with an incised mouth and appliqué eyes. Its horns are also shown by circlets with blind holes. This was probably part of a handle joined with some object. It bears incisions or nail marks near the neck and shoulders. Its tail and legs are broken and it is marked by some slip or polish.
23			7.5 x 6 cm	A fragmentary horse (?). Its snout is decorated with pinholes between two incised lines. The incisions occur on the body also. Appliqué eyes are shown by circlets. Some similar decorative holes within incised lines occur on the forehead. Broken legs are separately shown. It is of a dull red colour with some slip.
24	89.4/19		5 x 3.5 cm	A fragmentary and well-baked but unidentifiable animal with a prominent snout with eyes marked by appliqué circlets with holes in the centre. Two holes serve as nostrils. The ears are prominent but damaged, while two horns are marked by incised lines. The legs are damaged. It is dull red in colour.



Fig. 25



Fig. 26



Fig. 27

Animal Figurines

S. No.	Acc. No.	Site No.	Dimension L x B	Description and Remarks
25		RJ 289	4 x 3.5 cm	A fragmentary, perhaps seated bull figurine that is badly damaged. It is of dull red colour with traces of slip.
26		RJ 608	9 x 6 cm	A thick but damaged horse. It has perforations for the nose and appliqué eyes with holes. There are neck ornaments with holes between two incised lines. It is of grey colour.
27		RJ 635	5 x 5 cm	Probably a figurine of a horse, but badly damaged. It has a prominent snout and perforated eyes along with appliqué decoration on its neck and head. Its legs are broken and it is of dull red colour.



Fig. 28



Fig. 29



Fig. 30

Animal Figurines

S. No.	Acc. No.	Site No.	Dimension L x B	Description and Remarks
28	89.4/20		7 x 4 cm	Probably a portion of a spout, it is hollow inside. Two eyes are marked by appliqué circlets. Appliqué nostrils are marked with holes and appliqué eyes are deeply incised in the centre. The snout is quite prominently projected. The figurine is of dull red colour with white painting.
29		CAC RJ 1	12 x 8 cm	A fragmentary horse with headless rider holding the appliqué rein of the horse. The horse's snout and eyes are prominent and its mouth is projected by pinching. Its mane is prominent. The figurine is dull red in colour with white slip.
30	89.4/6	RJ 516		Fragmentary bird with tail portion and having a broken beak. It is flat below, probably was with a pedestal. It is dull red in colour.



Fig. 31



Fig. 32



Fig. 33

Animal Figurines

S. No.	Acc. No.	Site No.	Dimension L x B	Description and Remarks
31	89.4/3	RJ 328	7 x 4 cm	Small pedestalled bird, which probably served as a top for a playing board. Its beak and tail are prominent. It is of dull red colour.
32	89.4/1	RJ 611	7 x 6 cm	A pedestalled bird with its tail and wings flattened and with a prominent beak, probably part of the corner decoration of a votive tank. It is dull red in colour.
33		CAC RJ 14		A fragmentary pedestalled bird.



Fig. 34



Fig. 35



Fig. 36

Animal Figurines

S. No.	Acc. No.	Site No.	Dimension L x B	Description and Remarks
34		CAC RJ 16	4.5 x 3 cm	A fragmentary bird with deep incisions on the body and tail. It is bright red with slip.
35		CAC RJ 5	6 x 4 cm	A fragmentary, unidentifiable animal.
36		RJ 15	2.5 x 2 cm	A fragmentary bird with a prominent beak and appliqué eyes with holes. Its neck is elongated. It has bright red slip.



Fig. 37



Fig. 38



Fig. 39

Animal Figurines

S. No.	Acc. No.	Site No.	Dimension L x B	Description and Remarks
37		RJ 76	6.5 x 6 cm	A fragmentary pedestalled bird with a prominent beak. It is dull grey in colour.
38	62.32/1	RJ 382	7 x 5.8 cm	An elephant with separate legs that are now broken. It has prominent ears and head with a twisted tusk and thick body. It is dull red in colour.
39	62.32/36		7 x 5 cm	A small humped bull. Its front legs are broken and back legs are outstretched. Its horns are joined and it has a prominent snout while its hump is pinched out. It is of dull red colour.



Fig. 40



Fig. 41



Fig. 42

Animal Figurines

S. No.	Acc. No.	Site No.	Dimension L x B	Description and Remarks
40	62.32/26		9 x 7.5 cm	An elephant with a thick body and joined legs. Its ears are prominent and naturalistic. It has a twisted tusk. Faint traces of its tail are visible and its back is slightly projected. It is of dull red colour.
41	62.32/22	RJ 299	7.5 x 8 cm	A humped bull with round eyes marked by circlets. It is decorated all over by circlets, including the hump. Its deeply incised tail is twisted. Its front legs are broken while its back legs are separate and pointed. On the back there is decoration by circlets within two incised lines. There are two holes for the nostrils. Its mouth is deeply incised and it has two joined horns. The mouth and hump are projected prominently. It bears a bright red slip.
42	62.32/25	RJ 499	9 x 7.5 cm	A humped bull with horns. Its hump and snout are projected by pinching. Its legs are separate and outstretched while the body is slightly flat. It is dull red in colour.



Fig. 43



Fig. 44



Fig. 45

Animal Figurines

S. No.	Acc. No.	Site No.	Dimension L x B	Description and Remarks
43	62.32/58	RJ 106	8 x 5.5 cm	A damaged figurine of an animal with a pinched out saddle and tail. Its separate legs are broken, while its neck bears incision marks and is also broken. It has a deep bright red slip all over.
44	62.32/68		12 x 5 cm	A damaged figurine of an animal with a prominent snout and notchings and incisions on its forehead. There are two holes for its eyes and an incision for its mouth. Its neck portion is also decorated with notchings and incisions in the same manner. Its legs and back are badly damaged. It is thick and dull red in colour.
45	62.32/28	RJ 298	11.5 x 5.5 cm	A fragmentary figurine of a bull (?) with decoration near its tail, nail marks on the neck, two holes for the eyes, and an appliqué strip with pinholes on the head. Two horns are now partly damaged. Its snout is prominent with deep incisions to indicate the mouth. Its legs are broken and separately shown. It is dull red in colour with patches of slip.



Fig. 46



Fig. 47



Fig. 48

Animal Figurines

S. No.	Acc. No.	Site No.	Dimension L x B	Description and Remarks
46	62.32/76		11.5 x 8 cm	A damaged animal figurine with perforations for its two nostrils. There are two holes for its eyes. Its horns or ears are pinched out. Its legs are broken but separately indicated. Only two are now extant and outstretched. It is bright red in colour.
47	62.32/51		8 x 5.5 cm	A damaged animal figurine with appliqué strip marked by pinholes on the neck. There are appliqué circlets with pinholes and perforations for nostrils. Its horns are prominently pinched out. It is dull red in colour.
48	62.32/45	RJ 112	9 x 7 cm	A humped bull with its legs separate and outstretched. It has a pinched snout and horns. Its hump is prominently pinched out. It is devoid of any decoration and is of dull red colour.



Fig. 49



Fig. 50



Fig. 51

Animal Figurines

S. No.	Acc. No.	Site No.	Dimension L x B	Description and Remarks
49	62.32/60	RJ 33	8 x 6.5 cm	A thick animal figurine (probably an elephant) with faint traces of eyes marked by incisions and pinholes. Two appliqué strips on the back overlap each other and perhaps indicate some decoration. Its separate legs are now broken. It has deep red slip in patches.
50	62.32/83		8 x 6 cm	A damaged humped bull with a thick and coarse surface with some indication of decoration below the neck, which is hanging like a garland or chain and is marked by an appliqué strip with nail designs. Its ears are damaged and two holes serve as eyes. Its separate legs are broken.
51	62.32/19		6 x 7.5 cm	This damaged animal probably represents a bull. Its tail is marked by an appliqué strip bearing nail design. Its separate legs are outstretched but damaged. Its two leaf-shaped eyes are shown by incision and holes. Its projected horns are also damaged. It bears bright red slip.



Fig. 52



Fig. 53



Fig. 54

Animal Figurines

S. No.	Acc. No.	Site No.	Dimension L x B	Description and Remarks
52	62.32/23		5 x 3.5 cm	A small figurine of an animal, perhaps a dog/boar/pig(?). Its eyes are shown by pellets with pinholes. It has a slit mouth and its ears are clearly marked by pinholes. Its legs are separately shown by pinching and its tail is projected out by pinching. The back of the animal is curved round. It is greyish in colour.
53	62.32/97	RJ 201	5 x 9.5 cm	This fragmentary animal figurine of dog has chain in the neck incised with nail marks. Nail marks also occur as decoration on the forehead. It has pelleted eyes and round holes, perforations intended for pulling the animal. Its nose is shown by two holes and ears are projected out by pinching. This thick figurine has its legs separately indicated quite prominently. Its mouth is projected out. It is of dull red colour.
54	62.32/39	RJ 545	9.5 x 9 cm	A dog (?) with ears pinched out prominently and marked by pinholes. Its legs are damaged and its body has perforations for pulling. It has a rounded, projected mouth. Its pelleted eyes are marked by two pinholes. Its legs, separately indicated, are outstretched. It is bright red in colour.



Fig. 55



Fig. 56



Fig. 57

Animal Figurines

S. No.	Acc. No.	Site No.	Dimension L x B	Description and Remarks
55	62.32/78	RJ 647	5.5 x 4 cm	Figurine of a boar. Its head is thin and pinched out, while its mouth is projected out by pinching and is pointed. Its thick legs are pinched out. The back of the animal is slightly projected with faint traces of a tail and with deep incision on one side. It is of dull red colour.
56	62.32/33	RJ 954	7 x 7.5 cm	A damaged figurine of an animal (perhaps a dog) with a rounded mouth and perforations for nostrils. Round pelletes are found in a row with pinholes for decoration. Its legs are broken with two incised lines on the left leg. It is dull red in colour.
57	62.32/24	RJ 859	8.5 x 7 cm	Damaged figurine of a dog with round pelleted eyes. There are two holes for its nostrils. Its twisted tail is in appliqué style marked on the back. Its facial expression is prominent with a pinched out depression marked by thumb. Its small, separate legs are pinched out. It is dull red in colour.



Fig. 58



Fig. 59



Fig. 60

Animal Figurines

S. No.	Acc. No.	Site No.	Dimension L x B	Description and Remarks
58	62.32/99	RJ 107	5.5 x 4.5 cm	A seated figurine of a dog with a pinched out and pointed mouth. Its ears are marked by pinching and are quite prominent, though one ear is damaged. The figurine is rounded at the back and the neck portion is straight and elongated. Its legs are now broken. It is dull red in colour.
59	62.32/79		4 x 3.5 cm	A small, humped bull. The hump is made prominent by pinching. It has a rounded back and its legs are separately pinched out. Its mouth is projected outwards. It is red in colour with bright red slip.
60	62.32/21	RJ 588	7 x 5 cm	A humped bull with a pointed and projected snout. It has pointed horns and its legs are pinched out and are separate. It is red in colour with bright red slip.



Fig. 61



Fig. 62



Fig.63

Animal Figurines

S. No.	Acc. No.	Site No.	Dimension L x B	Description and Remarks
61		RJ 219	10 x 8.5 cm	A humped bull with pinched out hump incised on top. It has a thick body and chisel or nail marks on the forehead. Its eyes are incised with pinholes. There are two holes for its nostrils and its slit mouth is projected out. It has prominent ears and separate legs which are pinched out, and a rounded back. It is dull red with brownish slip.
62		CAC RJ 13	8.5 x 7.5 cm	A damaged unidentifiable animal with separate legs pinched out and rounded back. It is grey in colour.
63	62.32/10	RJ 651	7 x 6 cm	Damaged pedestalled bird, dull red in colour.



Fig. 64



Fig. 65



Fig. 66

Animal Figurines

S. No.	Acc. No.	Site No.	Dimension L x B	Description and Remarks
64	62.63/91	RJ 642	8 x 6 cm	A small figurine of a dog with slit mouth. It has two holes for eyes and an appliqué strip on the neck to indicate a chain marked by nail marks on it. It has thick separate legs and a rounded back. Its pinched out mouth is prominent and there is an indication of ears and decoration on the forehead. The decoration consists of appliqué strip with nail marks. It is dull red in colour with bright red slip.
65	62.32/69		6 x 6 cm	Front half of a small bull figurine with punched circlelets to serve as a chain. It has a prominent hump. Its mouth is projected by pinching and its eyes are circular with incision and pinholes. Its slit mouth is quite prominent with marks of two nostrils. The part below the neck is made prominent by pinching. There are circlelets all over the body. Its ears are marked by pinholes and two horns are slightly projected. There are circlelets also on the hump from the forehead portion. The figurine is badly damaged. It is of red colour with traces of red slip.
66	62.32/70	RJ 295	7 x 6.5 cm	Figurine of a dog with a damaged back and two prominent ears. It has a slit mouth and two holes for nostrils. Its eyes are marked by circlelets and holes with an appliqué strip on the forehead containing pinholes for decoration. It has bright red slip.



Fig. 67



Fig. 68



Fig. 69

Animal Figurines

S. No.	Acc. No.	Site No.	Dimension L x B	Description and Remarks
67	62.32/43	RJ 984	10 x 8 cm	A horse rider with saddle, made quite prominent by appliqué style. It has joined legs. The figurine is damaged and is of dull red colour.
68	62.32/9	RJ 639	9.5 x 5.5 cm	An animal with a pointed mouth and pinched out ears. It has an appliqué tail twisted down as well as broken legs. It is of dull red colour.
69	62.32/35	RJ 150	9 x 7 cm	A thick animal figurine with a human figure carried on its back. Round pelletes serve as its chain in the neck. It has joined legs and its thick tail is prominent. There is a round projection at the back. It is dull red in colour and is painted white.



Fig. 70



Fig. 71



Fig. 72

Animal Figurines

S. No.	Acc. No.	Site No.	Dimension L x B	Description and Remarks
70	62.32/31	RJ 137	11 x 4.5 cm	A damaged animal figurine of a dog (?). One leg that now survives is outstretched. Its tail is marked by an appliqué strip with holes. There is another strip on the neck, also with holes. Its prominent ears are pinched out. There is a strip with holes on its forehead. Its slit mouth is now damaged. It has two eyes with holes and is red in colour.
71	62.32/44		6.5 x 5 cm	A small figurine of a dog with long, prominent neck. Its legs are separate and broken and its back is projected by pinching. Its mouth and ears are pinched out. It is dull greyish red in colour.
72	62.32/56		10.5 x 6.5 cm	The damaged back portion of an animal with decoration in the form of nail marks and incisions. The tail is prominent and hanging on one side. It is pointed and pinched out. Its elongated body has outstretched separate legs. It is bright red in colour.



Fig. 73



Fig. 74



Fig. 75

Animal Figurines

S. No.	Acc. No.	Site No.	Dimension L x B	Description and Remarks
73	62.32/89	RJ 118	6 x 5.5 cm	A double-moulded humped bull, perhaps seated on a round pedestal, with faint traces of a tail visible. Its legs are folded to show that it is in a seated position. Its hump is prominent though the head is missing. The part below the neck is projected prominently. It is dull red in colour.
74	62.32/42		7 x 5.5 cm	The damaged figurine of an animal with prominent appliqué decoration. It has a twisted tail and a broken snout that is still prominent. Its separate legs are now badly damaged. It has a prominent ear portion and is dull red in colour.
75	62.32/65	RJ 45	9 x 6 cm	Horse with rider, badly damaged, with its long tail prominently shown by pinching. It has joined legs and a prominent snout, now damaged. It is of dull red colour.



Fig. 76



Fig. 77



Fig. 78

Animal Figurines

S. No.	Acc. No.	Site No.	Dimension L x B	Description and Remarks
76	62.32/85	RJ 595	5.8 x 4 cm	A small humped bull with pointed legs shown separately. Only two legs survive now. The hump is prominently pinched out. Only one ear and a horn now remain and are prominently pinched out. Its snout is prominent, pointed and pinched out. It is of dull red colour.
77	62.32/82		6.5 x 6 cm	The figurine of a humped bull with separate outstretched legs that are now broken. Its mouth and ears are pinched out. It is of dull greyish red colour.
78	62.32/80		4.5 x 5 cm	A fragmentary figurine of a dog with pointed ears projected towards the front to indicate alertness. Its mouth is rounded with perforations for nostrils. Its eyes are marked by pellets and pinholes. Its neck has indication of a chain shown by appliqué strip with pinholes as decoration. It is dull red in colour.



Fig. 79



Fig. 80



Fig. 81

Animal Figurines

S. No.	Acc. No.	Site No.	Dimension L x B	Description and Remarks
79	62.32/30		10 x 6 cm	A broken humped bull. There is indication of a belt with incision and circlets. Its separate, thick prominent legs are broken. Its snout is made prominent by pinching. Its ears are shown by an incision on a projection. Its horns are now broken. It is of bright red colour.
80	62.32/61		9 x 6.5 cm	A thick animal figurine, probably elephant, with pinched out tail, now broken. It has separate thick legs with flat bottoms to indicate feet. It is dull red in colour.
81	62.32/90		7 x 5 cm	An elephant rider. It has a broken, prominent snout and round eyes. It is of dull red colour.



Fig. 82



Fig. 83



Fig. 84

Animal Figurines

S. No.	Acc. No.	Site No.	Dimension L x B	Description and Remarks
82	62.32/4	RJ 893	14 x 9 cm	A thick, damaged figurine of an elephant with diamond-shaped eyes. Its back is marked by an appliqué strip with nail marks and faint traces of a tail perhaps made by pinching. Its separate legs are now broken. There are two small round marks on the forehead. Its ears are shown by pinching. It is of dull red colour.
83	62.32/100	RJ 872	14 x 10 cm	A damaged animal figurine. It is thick and has four separate legs. It is perhaps a dog and is of dull red colour.
84	62.32/98	RJ 659	6 x 6.5 cm	The head of an animal with a prominent slit mouth, two nostrils, eyes marked by round appliqué pellets and pinholes, which are quite prominent and perforation to indicate the jaw. Decoration on the forehead is shown by nail marks with incision, which further enhances the beauty of the animal. It is of bright red colour.



Fig. 85



Fig. 86



Fig. 87

Animal Figurines

S. No.	Acc. No.	Site No.	Dimension L x B	Description and Remarks
85	62.32/64	RJ 220	6.5 x 4.5 cm	Almost the same as above but slightly bigger with a belt around the neck marked by nail marks and incision. The ears and horns are prominently projected out, curved and pointed. It is of bright red colour.
86	62.32/95		6 x 5.5 cm	A damaged figurine of an animal with rounded snout. It has eyes marked by pinholes, with thick and prominent round marks. There are perforations on the figurine and its ears and horns are projected outwards. It is of bright red colour.
87	62.32/74		9 x 6 cm	An animal with a rider. It is damaged and has joined legs. It is of dull red colour.



Fig. 88



Fig. 89



Fig. 90

Animal Figurines

S. No.	Acc. No.	Site No.	Dimension L x B	Description and Remarks
88	62.32/66	RJ 258	8 x 6.5 cm	An animal with a rider with a damaged head. Its joined legs are broken. It is dull red in colour.
89	62.32 75	RJ 603	5 x 4 cm	A small animal figurine (probably a dog) with its ears and snout pinched out. It has separate legs, three of which are now almost broken. The legs are pointed and stretched out. There are depressions to indicate the eyes. Its back is damaged. It is red in colour.
90	62.32/98		8 x 5 cm	A thick, unidentified damaged animal figurine with one leg now intact, outstretched and separate. Its tail is indicated by pinholes slightly bent towards the right. It is of dull red colour.



Fig. 91



Fig. 92



Fig. 93

Animal Figurines

S. No.	Acc. No.	Site No.	Dimension L x B	Description and Remarks
91	62.32/92	RJ 593	5.5 x 3.5 cm	A small figurine of dog with its back damaged. Three of its legs are intact and shown pinched out and slightly pointed and separate. Its snout is pinched out with two holes serving as eyes. Its ears are pinched out and its back and tummy are slightly curved outwards. It is dull red in colour.
92	62.32/96		6 x 4 cm	A fragmentary animal figurine with two incised lines on the back. Its snout portion is pinched out with perforations to serve as eyes and its ears pinched out. The legs are broken and separate. It has patches of bright red slip.
93	62.32/59	RJ 604	9 x 5.5 cm	The front of an animal (perhaps a bull) with a belt-like decoration on the neck marked by pinholes within incised lines. It has pelleted eyes with two pinholes and its snout is outwardly curved and made prominent by two incised lines each for the mouth and nose. Perforations are marked and there are two incised lines on the forehead. Its horns are now damaged. It is of bright red colour.



Fig. 94



Fig. 95



Fig. 96

Animal Figurines

S. No.	Acc. No.	Site No.	Dimension L x B	Description and Remarks
94	62.32/81	RJ 438	7 x 5.5 cm	An animal with a rider (probably an elephant). There are faint traces of eyes, snout and marks below the mouth. It is of dull red colour.
95	62.32/54	RJ 485	8 x 5.5 cm	A humped bull with a prominent flat hump. It is badly damaged. It has a pronounced snout that is pinched out and looks flat. It is of dull red colour.
96	62.32/63	RJ 457	6 x 5 cm	A fragmentary animal figurine of a dog or bull with prominent pinched out ears, a mouth carved with perforations and an appliqué strip with pinholes on the forehead. Its separate legs are now broken. It is of dull red colour.



Fig. 97



Fig. 98



Fig. 99

Animal Figurines

S. No.	Acc. No.	Site No.	Dimension L x B	Description and Remarks
97	62.32/47	RJ 402	8 x 4 cm	A damaged figurine of a bull with its snout curved round and separate outstretched legs that are now badly damaged. It is of dull red colour.
98	62.32/94	RJ 79	6 x 2.5 cm	The head of an elephant with prominent ears and tusk. It is of dull red colour.
99	62.32/115		15 x 7 cm	A large, damaged figurine of an elephant with a prominent tusk. It has marks of teeth and is grey in colour.



Fig. 100



Fig. 101



Fig. 102

Animal Figurines

S. No.	Acc. No.	Site No.	Dimension L x B	Description and Remarks
100	62.32/73	RJ 591	7 x 8.5 cm	A damaged animal figurine with a prominent folded snout. Its legs are separate and outstretched. It is dull red in colour.
101	62.32/120		9 x 7 cm	A damaged animal figurine with separate outstretched legs which are pinched out. It is of dull red colour.
102	62.32/15		19 x 12 cm	Elephant with stamped designs on the forehead. Its ears are prominent and curved out. It has appliqué stamped designs all over the body near the ear. The tusk is prominent but broken. Two teeth are indicated prominently. Its has diamond-shaped eyes with incision perhaps done by nail. It is coarse and of bright red colour.



Fig. 103



Fig. 104



Fig. 105

Animal Figurines

S. No.	Acc. No.	Site No.	Dimension L x B	Description and Remarks
103	62.32/105	RJ 454	5.5 x 4 cm	A damaged animal figurine with a folded snout. It might be an elephant. Its ears are prominently pinched out and it is of dull red colour.
104	62.32/113	RJ 78	9.5 x 6.5 cm	An unidentified animal with a rider. It has separate, damaged legs and is of bright red colour.
105	62.32/72		10 x 8.5 cm	A hollow, damaged figurine of a ram with indication of fur up to its waist and with twisted horns.



Fig. 106



Fig. 107



Fig. 108

Animal Figurines

S. No.	Acc. No.	Site No.	Dimension L x B	Description and Remarks
106	62.32/123		9 x 7 cm	A damaged humped bull with an appliqué strip on its neck to serve as a garland or belt. It has an appliqué tail with nail marks, appliqué circular pellets with nail marks on the back, near the neck and forehead, and legs that are separate but pointed and two of which are now broken. It is dark grey in colour.
107	62.32/118		8 x 5.5 cm	Damaged, unidentifiable animal of bright red colour.
108	62.32/48	RJ 636		Damaged animal figurine of a bull or a dog with two eyes marked by pellets with a nail mark. It has holes to indicate nostrils (?) while on the neck are nail marks within incised lines. Its snout is slit whereas its prominent separate legs are now broken. It is of bright red colour.



Fig. 109



Fig. 110



Fig. 111

Animal Figurines

S. No.	Acc. No.	Site No.	Dimension L x B	Description and Remarks
109	62.32/16	RJ 629	13 x 9 cm	The hollow figurine of a bird with incised lines on the tail. It is winged and has a hole on the body. It has a big head and is probably a rattle bird or a toy. It is of red colour.
110	62.32/41		12 x 6 cm	An animal figurine either of a bull or a dog with its tail pinched out prominently and twisted to the right. There are two holes on the snout, an incised line on the forehead with pinholes above and its ears are pinched out. It has a tail. It is bright red in colour with red slip.
111	62.32/11		8 x 7 cm	An animal figurine (probably a horse) with traces of eyes. Its back is curved. It has joined legs. Its mane is prominent and there are faint traces of a tail. It is of dull red colour.



Fig. 112



Fig. 113



Fig. 114

Animal Figurines

S. No.	Acc. No.	Site No.	Dimension L x B	Description and Remarks
112	62.32/9	RJ 88	9.5 x 5.5 cm	A bird figurine with perforations. It has a pinched out tail and head and also a perforation below the neck through the upper portion of its tail.
113	62.32/108	RJ 109	8 x 5.5 cm	A fragmentary unidentified animal figurine, probably a humped bull. It is of dull red colour.
114	62.32/117		6.5 x 4 cm	A hollow figurine of a bird with one leg pinched out with nail marks. Its wings are marked by incision and nail marks and its tail is raised quite prominently with incision. It is of dull red colour.



Fig. 115



Fig. 116



Fig. 117

Animal Figurines

S. No.	Acc. No.	Site No.	Dimension L x B	Description and Remarks
115	62.32/111		4 x 3.5 cm	The head portion of a dog figurine with depressions for eyes, a bulbous nose and prominent slit mouth. Its ears are partly broken and pinched out. It is of dull red colour.
116	62.32/53	RJ 221	8 x 5.5 cm	A fragmentary figurine of a dog with a rounded mouth and eyes marked by holes. It has separate legs and is red in colour.
117	62.32/104	RJ290	7 x 6.5 cm	A fragmentary humped bull with separate legs. It is dull red in colour.



Fig. 118



Fig. 119



Fig. 120

Animal Figurines

S. No.	Acc. No.	Site No.	Dimension L x B	Description and Remarks
118	62.32/27		6 x 9 cm	A fragmentary animal figurine which is dull red in colour.
119	62.32/77	RJ 630	6 x 5.5 cm	An elephant with its tusks broken and joined legs and ears marked by depressions. Its back is prominent and it is of dull red colour.
120	62.32/3	RJ 105	7 x 5 cm	A fragmentary humped bull with a pinched out flat hump, prominent horns, outward projecting snout and small legs pinched out. It is of dull red colour.



Fig. 121



Fig. 122



Fig. 123

Animal Figurines

S. No.	Acc. No.	Site No.	Dimension L x B	Description and Remarks
121	62.32/55	RJ 339	6.5 x 4.4 cm	A fragmentary animal with small, pinched out legs and mouth projected out. It is of dull red colour.
122	62.32/101	RJ 139	5 x 3 cm	A thick, unidentifiable animal (possibly a boar) with joined legs. It is of dull red colour.
123	62.32/62		6 x 4.5 cm	A fragmentary animal figurine with only one eye now extant, shown by pellet and a hole. It has an appliqué strip with holes on its back and is of bright red colour with traces of red slip.



Fig. 124



Fig. 125



Fig. 126

Animal Figurines

S. No.	Acc. No.	Site No.	Dimension L x B	Description and Remarks
124	62.32/119		8.5 x 6 cm	A humped bull with projected pointed mouth and leaf-shaped eyes marked by incision and hole. Its hump is flattened by pinching and is quite prominent. Its legs are projected out and are separate and quite prominent. Its horns are now broken but were prominent. There is a depression below the horns. It is dull red in colour with red slip.
125	62.32/57	RJ 334	10 x 8.5 cm	A fragmentary humped bull with projected mouth, ears and prominent horns made by pinching. There is a thick fold near the neck. Its joined legs are now damaged. It has a prominent jaw and bulging eyes. It is dull red in colour.
126	62.32/121		10 x 5 cm	A fragmentary figurine of a ram with perforations for nostrils, holes for eyes whereas legs separately pinched out. Its tail is twisted and there are pinholes on the back for decoration. It is grey in colour.



Fig. 127



Fig. 128



Fig. 129

Animal Figurines

S. No.	Acc. No.	Site No.	Dimension L x B	Description and Remarks
127	62.32/86		4.5 x 4 cm	A fragmentary animal figurine (probably a humped bull) with small legs prominently pinched out which are rounded and thick. It is grey in colour.
128	62.32/112		12 x 4.5 cm	An animal figurine with a big appliqué twisted tail, eyes indicated by pellets and two holes below which are perhaps meant to indicate nostrils. Its mouth is projected out by pinching and is rounded. The elongated body has separate legs that are now broken. It is of bright red colour.
129	62.32/116		6 x 6 cm	A fragmentary figurine of a bird with a pointed beak and wings flattened but now damaged. It is of dull red colour.



Fig. 130



Fig. 131



Fig. 132

Animal Figurines

S. No.	Acc. No.	Site No.	Dimension L x B	Description and Remarks
130	62.32/102	RJ 895	7 x 4 cm	A damaged figurine of an animal bearing a stamped design (criss-cross within a circle), with lozenge-shaped eyes. It is probably an elephant with its tusks now broken. It is dull red in colour.
131	62.32/125	RJ 132	7 x 4 cm	The leg of an animal (?) with very prominent marks of claws. It is dull red in colour.
132	62.32/37		9 x 6 cm	A figurine of a ram with a twisted horn that is quite prominent. Only one horn survives. There are marks of pelleted eyes with holes and two nostrils are clearly shown by holes. There is also a slit mouth and the animal's legs are outstretched and separate. Its mouth is projected out and its tail is pinched out and is now damaged. It is greyish red in colour.



Fig. 133



Fig. 134



Fig. 135

Animal Figurines

S. No.	Acc. No.	Site No.	Dimension L x B	Description and Remarks
133	62.32/7	RJ 281	7 x 11 cm	An animal figurine of a bull with its hump now broken. This badly damaged figurine has leaf-shaped eyes incised with a hole inside for the pupils and its two nostrils are marked by holes. It has a slit projected mouth and its ears are pinched out, marked by incision and holes. One horn now survives and is pinched out. Its legs are now broken, separate and outstretched. Its forehead had some decoration but is now damaged and there is a pinched out portion below the neck. It is grey in colour.
134	62.32/14		10 x 12 cm	A figurine of a large horse with decoration in the form of appliqué bands and a round buckle, perhaps intended to show the saddle of the animal. The belt in the neck is also now missing while the mane is flattened by pinching. Its legs are outstretched, separate and prominent. Its head is now damaged as is the rounded back with tail. It is painted white.
135	62.32/87	RJ 885	6 x 4.5 cm	A fragmentary, unidentified animal figurine with decoration marked by nail marks within incised lines. It is bright red in colour.



Fig.136



Fig. 137



Fig. 138

Animal Figurines

S. No.	Acc. No.	Site No.	Dimension L x B	Description and Remarks
136	62.32/110		5 x 5.5 cm	The leg of an animal with bright red slip.
137	62.32/84		7 x 5 cm	A horse rider figurine with the head of the animal lowered. The head is quite prominent and appears naturalistic. The rider holds the belt which is faintly visible and the horse's long tail is prominently made by pinching. It has short joined legs and a flattened mane that is shown by pinching. It has round eyes while the head of the rider is missing. It is painted white.
138	62.32/122	RJ 14	4 x 3 cm	A fragmentary figurine of a humped bull, dull red in colour.



Fig. 139



Fig. 140



Fig. 141

Animal Figurines

S. No.	Acc. No.	Site No.	Dimension L x B	Description and Remarks
139	62.32/71		8.5 x 5 cm	A fragmentary humped bull. The portion below the neck is prominent. It is of dull red colour.
140	62.32/114			It is a beautiful figurine of a humped bull with horns and slit mouth. Eyes are denoted by two applied circlelets. It is light grey in colour.
141	62.32/67			It is a horse with rider figurine broken from chest level of the rider. It is of dull red colour.



Fig. 142



Fig. 143

Animal Figurines

S. No.	Acc. No.	Site No.	Dimension L x B	Description and Remarks
142	62.32/104			It is possibly a figurine of a boar with a snout. It is dull red in colour.
143		RJ 301		It is a broken bird figurine in red colour.



92439



Website: www.asi.nic.in